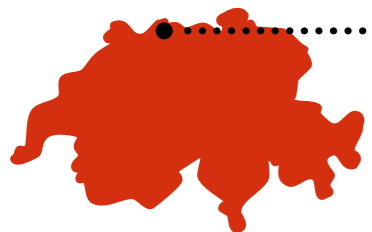


Location



Centrally located in **Europe** where **Switzerland, France** and **Germany** meet up



High speed train connections: from **Frankfurt** and **Paris** → 3h
Milan → 4h



Tri-national **EuroAirport** only **6 km** from the city centre

Zürich International Airport with 320 departures per day only **80km** away

Well-developed public transport network – **free of charge** for all hotel guests

Congress Center Basel

State-of-the-art infrastructure with **25 modular rooms**



Plenaries for up to **10,000 pax**

Largest room for up to **3,000 pax**

The Government of Basel **funds Congresses** upon request



Host of successful **international conferences**:

- 21st OSCE Ministerial Council, **2,200 pax**
- ITI World Symposium, **5,000 pax**
- DGHO Tri-national conference, **5,500 pax**
- AMEE, **4,000 pax**
- DIA Annual Meeting, **2,500 pax**

Accommodation



10,000 hotel rooms in the Basel metro area

1,000 hotel rooms

within walking distance from the Congress Center Basel

3,100 Airbnb places

Life Sciences Prime Location for the



Basel has the **Headquarter** of **Roche** and **Novartis**, two of the five **globally leading pharmaceutical companies**

It's thus no surprise: **DNA, LSD** and **Vitamin C** were discovered in Basel

Highest concentration of **life sciences companies** in Europe

Did you know...

Basel is the **oldest university** of the Swiss Confederation founded in **1460**

MCH Group's **Art Basel**, is the world's **premier show** for modern and contemporary art

The **Bank for International Settlements** is based in Basel

Basel is the **home town** of tennis legend **Roger Federer**

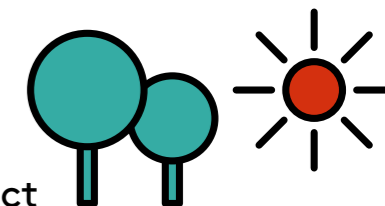


MCH Group's **Baselworld** unites the world's leading watch and jewellery brands

Sustainability

100% of Basel's electricity is generated from **renewable sources**

Green city with at least one park in each district



Countless swimmers take a dip in the **river Rhine** every evening in summer