



MCH Lounge

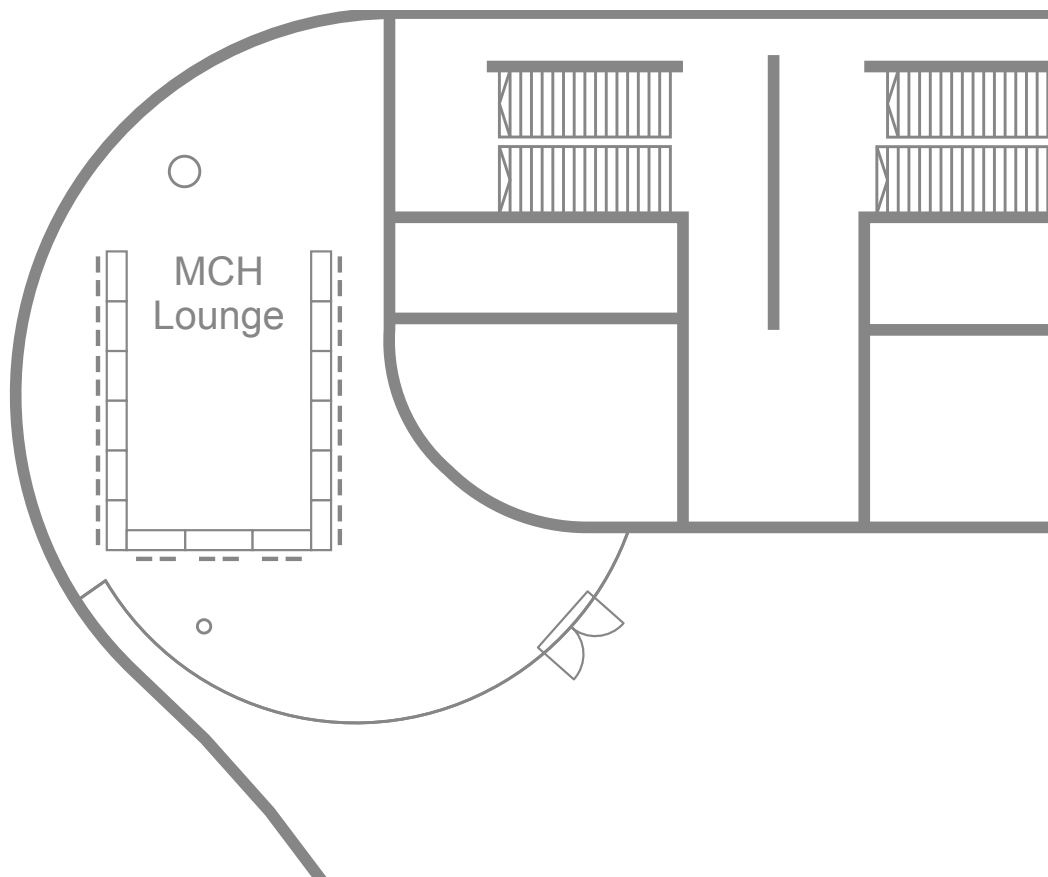
The «MCH Lounge» is located in the Foyer South section of the City Lounge, the covered-over area of the Exhibition Square, directly next to the entrance to the Event Hall. Access is via the Foyer South or via a separate entrance from Exhibition Square.

Behind the extensive glass frontage, which forms part of the spatial transparency of the new hall complex designed by Herzog & de Meuron, the «MCH Lounge» offers a surface area of some 170 m². The glass

frontage can have curtains drawn across it to stop people looking in, or can be completely darkened.

As a modern and dynamic room, the «MCH Lounge» is particularly suitable for events for up to 100 people. The Lounge is equipped with basic, state-of-the-art technical facilities. Additional technical equipment can be installed as required. The MCH Lounge can also be used in combination with the Foyer South and the Event Hall.

MCH Lounge: Facts and figures



Key figures

Area in m ²	170
Clear height in m	4
Concert seating	100
Seminar seating	64
Banquet seating	77
Cocktails	100
Stage/podium	Mobile installation
Sound system	Mobile installation
Simultaneous interpreting system	Mobile installation
Interpreters' booths	-
Discussion system	Mobile installation
Video and data projection	Mobile installation
Film screens	Fixed installation
Lighting system	Fixed installation